

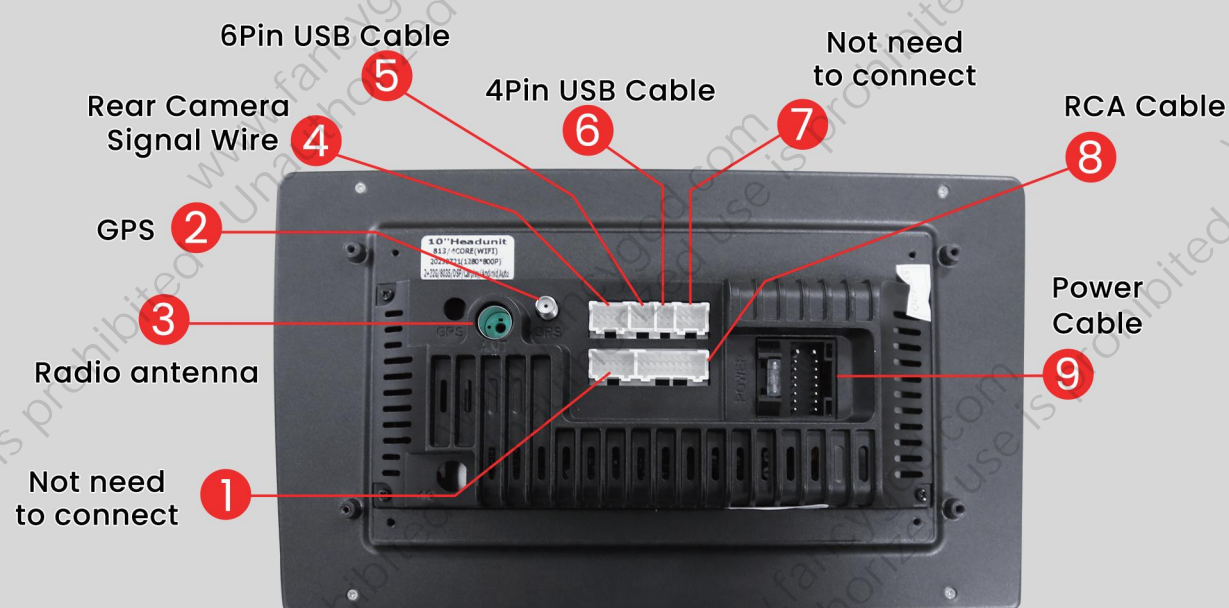
# for Ford Focus 2004-2014

# Central Control Disassembly and Operation

## Post-installation rendering



## Wiring diagram



**MIND the connector clip direction (clips end facing down).**



## Original Vehicle Wiring Diagram

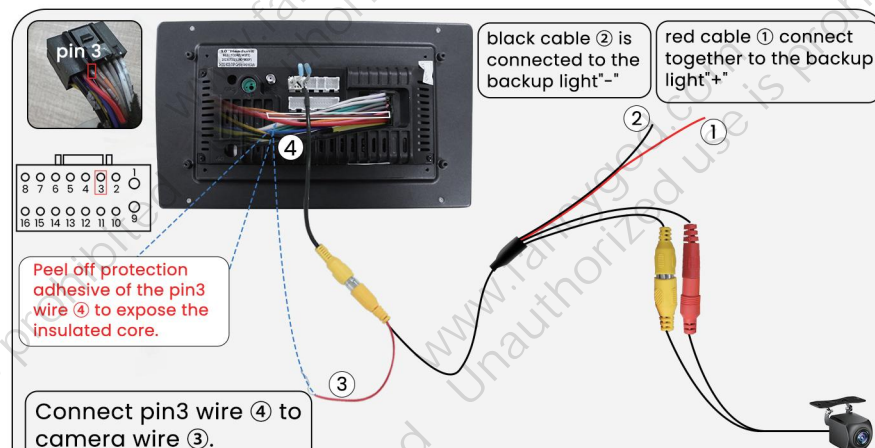
Connect the original car harness plug: power/speaker/SWC



9 power Cable

## Power Line Definition Chart

Front Left (+)			Rear Right (+)
Front Left (-)			Rear Right (-)
Front Right (+)			Rear Left(+)
Front Right			Rear Left(-)
Steering Wheel Key(+)			Power Antenna(+)
Rear Camera(+)			Steering Wheel Key 2 (+)
Accessory/Ignition(+)			Dimmer/Illumination (+)
Chassis Ground (-)			Constant power supply



Wires color may be different due to various batches, but pin locations will be the same. You can search Youtube video ID "VWcklCYwF5s" on Youtube to find our supplied camera connection video tutorial

For more guidance/video tutorial, please copy this link or scan the QR code to enter into our official website:

<http://www.fancygod.com>

## Instructions





Please be sure to follow the steps shown in pic **1**, press Setting→Factory (input password 3368) →Car Model to choose "NULL—OTHER—No protocol—Null".

If your car has steering wheel control buttons, to prevent the steering wheel controls not working properly, please open the SWC app on the radio and refer to the app's instruction to manual learn the steering wheel control keys accordingly (as shown in pic **2**).



## FAQ

### Q: How to use wireless Apple CarPlay?

1. Turn on Bluetooth app on the radio and connect to your phone's bluetooth (password: 0000).
2. Open the Carlink 2.0 App on the car radio to activate Carplay.  
(Scan the QR code on the right to view the video tutorial)



### Q: How to use wireless Android auto?

1. Turn on Bluetooth app on the radio and connect to your phone's bluetooth (password: 0000).
2. Download the Android Auto APP at your phone's Play store first  
(Confirm the phone can support Android Auto).
3. Open the Carlink 2.0 App on the car radio to activate Android Auto.  
(Scan the QR code on the right to view the video tutorial)



## FCC warning

This device complies with Part 15 of the FCC Rules. Operation is subject to the following two conditions:(1) this device may not causeharmful interference,and (2) this device must accept any interference received,including interference that may cause undesired operation.