

USE MANUAL

Car Stereo

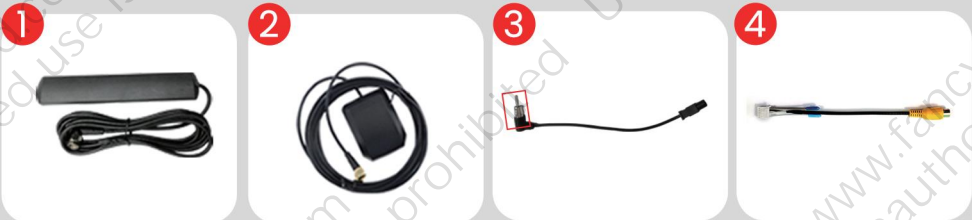
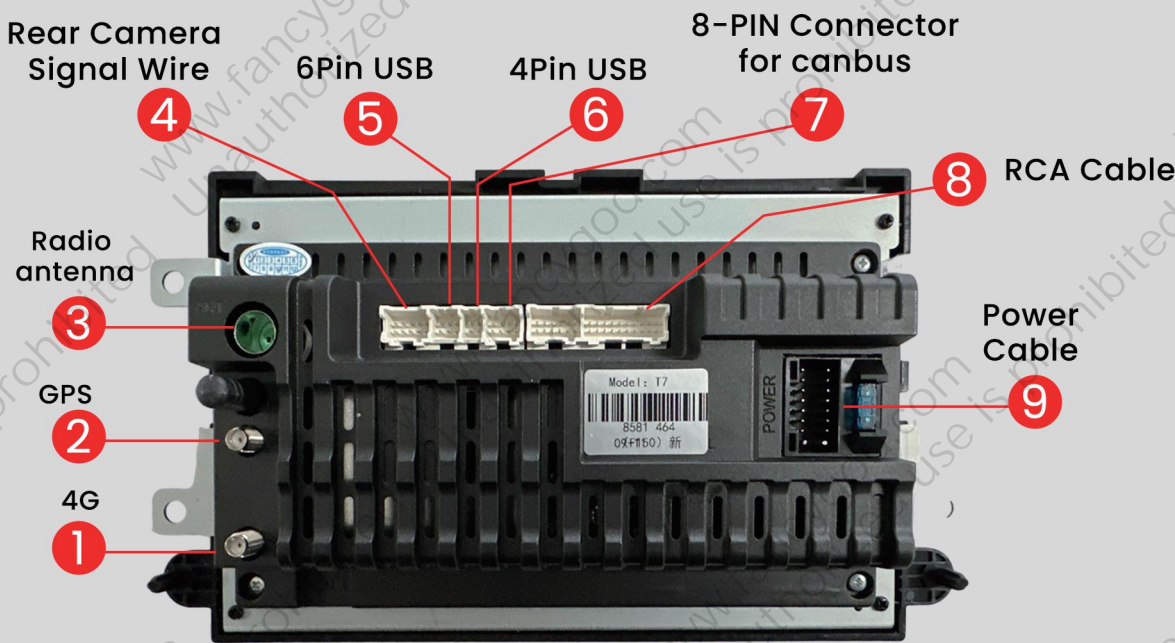
for Ford F150 2004-2008

Central Control Disassembly
and Operation

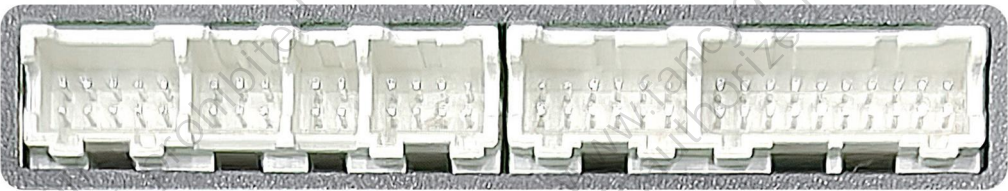
Post-installation rendering



Wiring diagram

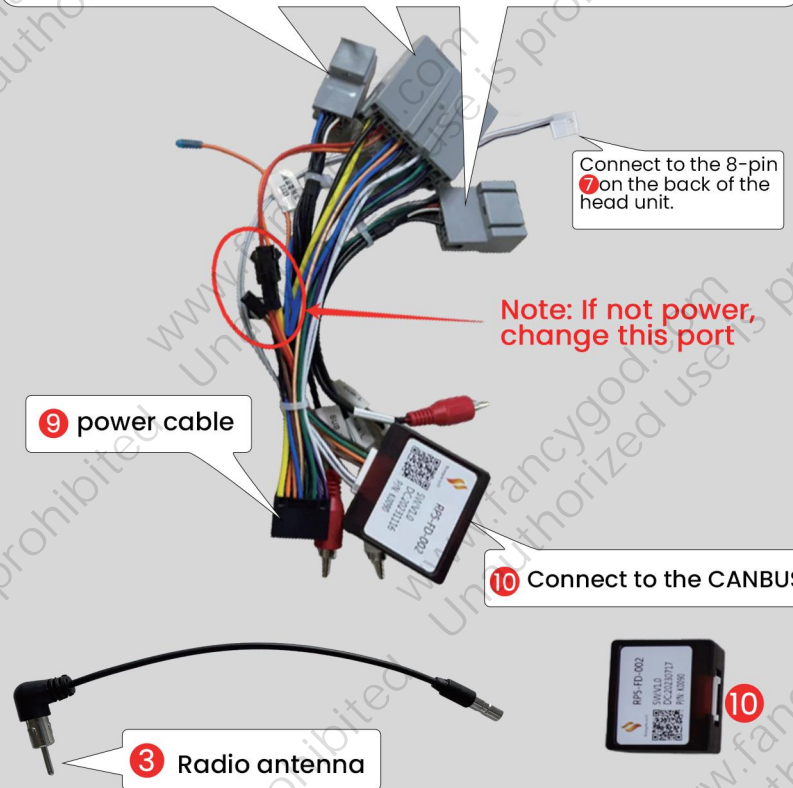


**MIND the connector clip direction
(clips end facing down).**



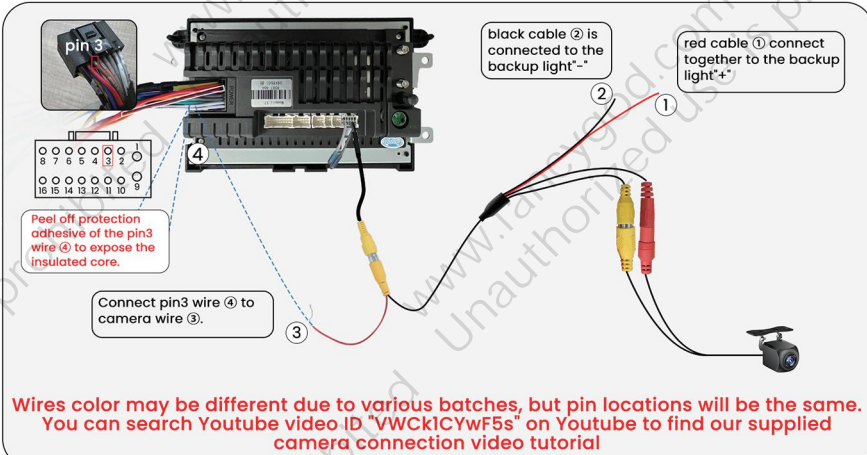
Original Vehicle Wiring Diagram

Connect to the original car harness plug: power/speaker/SWC



Power Line Definition Chart

Front Left (+)			Rear Right (+)
Front Left (-)			Rear Right (-)
Front Right (+)			Rear Left(+)
Front Right (-)			Rear Left(-)
Steering Wheel Key(+)			Power Antenna(+)
Rear Camera(+)			Steering Wheel Key 2 (+)
Accessory/Ignition(+)			Dimmer/Illumination (+)
Chassis Ground (-)			Constant power supply



For more guidance/video tutorial, please copy this link or scan the QR code to enter into our official website:

<http://www.fancygod.com>

Instructions



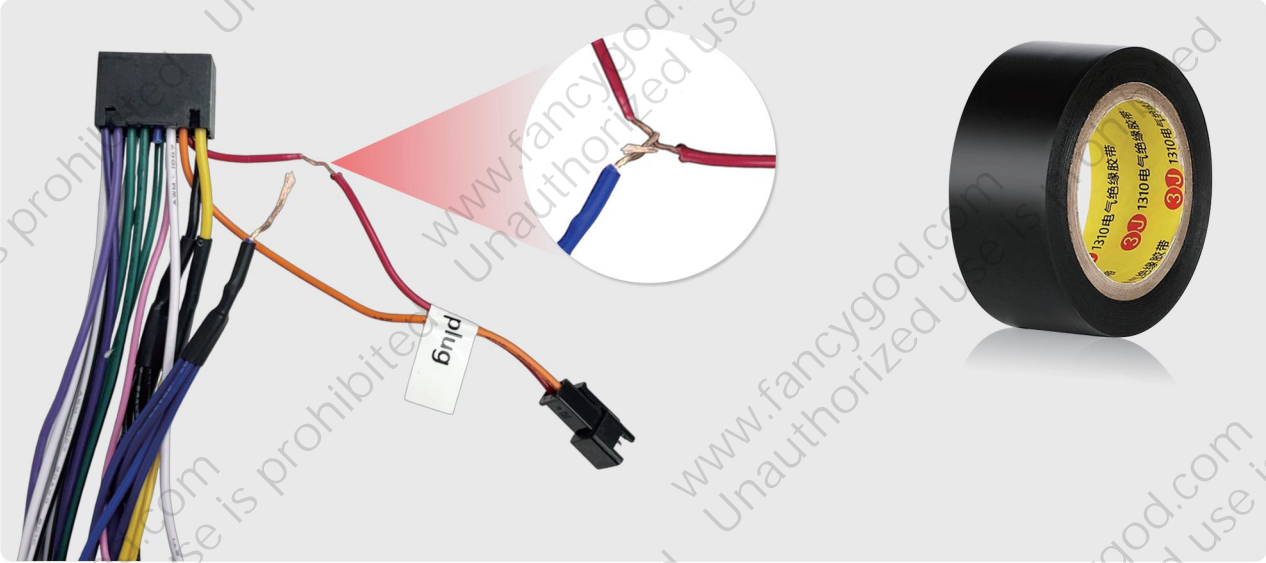
To prevent issues with steering wheel controls, air conditioning, or volume not functioning properly, please be sure to follow the steps shown in image 1:

Please press Settings—Factory(input password 3368)—Car Model, and select “XP (Simple) — Ford — F150 — 2009-2012”

1

CAN Box type	Car Brand	Car Model	CAN Box
★ XP(Simple)	★ Ford	★ F150	★ 2013
★ OD	★ Jeep	★ EcoSport	★ 2009-2012
★ LSDT	★ OPEL	★ C-MAX	

If the sound does not work properly, Please cut off the blue wire on the power cable, peel the insulation off the red wire (instead of cutting it off), then wrap them up and use insulating tape or a clip to protect the connection.



(Scan the QR code below to watch the video tutorial)



FAQ

Q: How to use wireless Apple CarPlay?

1. Turn on Bluetooth app on the radio and connect to your phone's bluetooth (password: 0000).
2. Open the Carlink 2.0 App on the car radio to activate Carplay.
(Scan the QR code on the right to view the video tutorial)



Q: How to use wireless Android auto?

1. Turn on Bluetooth app on the radio and connect to your phone's bluetooth (password: 0000).
2. Download the Android Auto APP at your phone's Play store first
(Confirm the phone can support Android Auto).
3. Open the Carlink 2.0 App on the car radio to activate Android Auto.
(Scan the QR code on the right to view the video tutorial)

