

Manual

Car Stereo

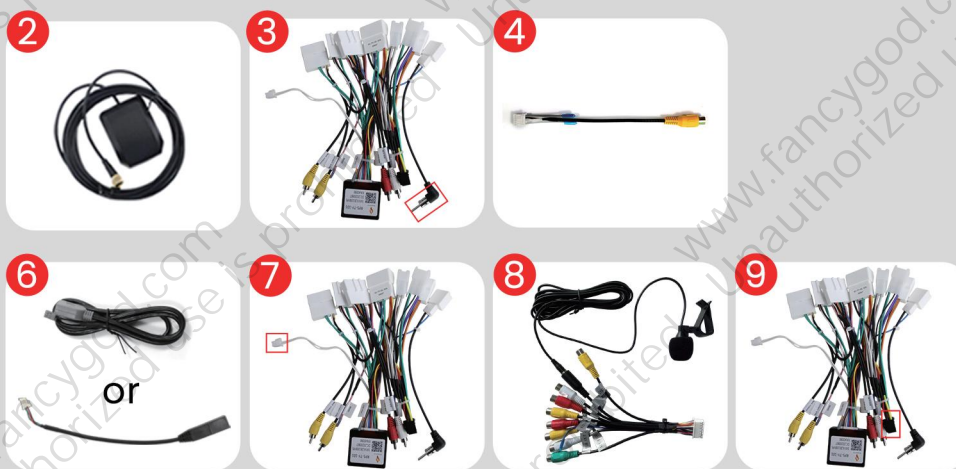
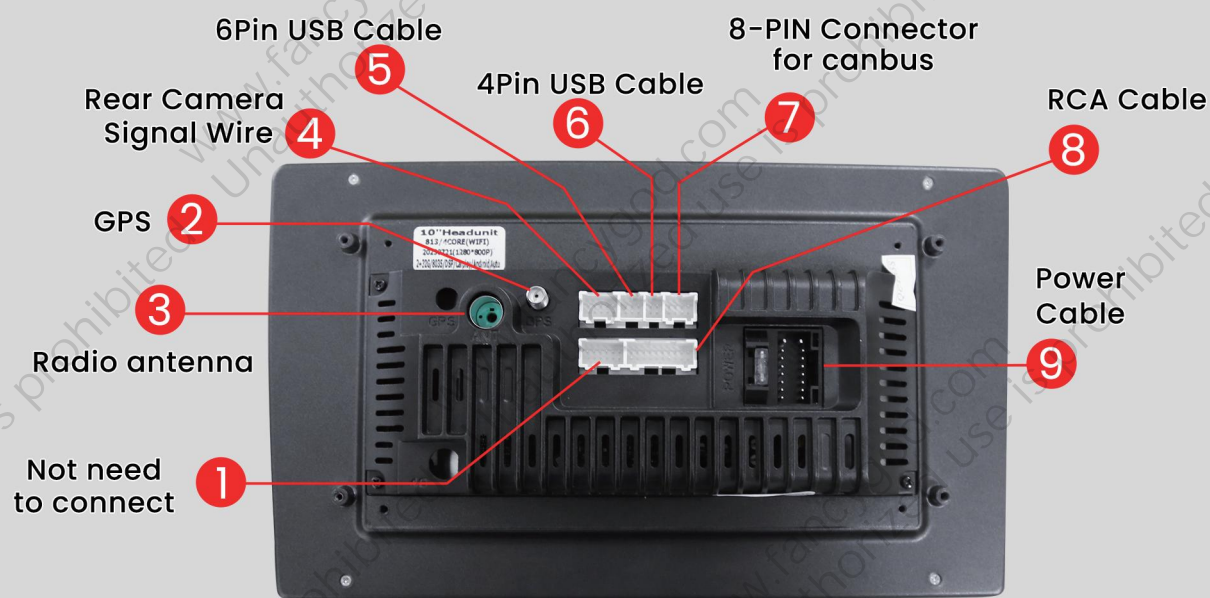
for Toyota Tundra 2007-2013
for Toyota Sequoia 2008-2018

Car Stereo for Chevrolet

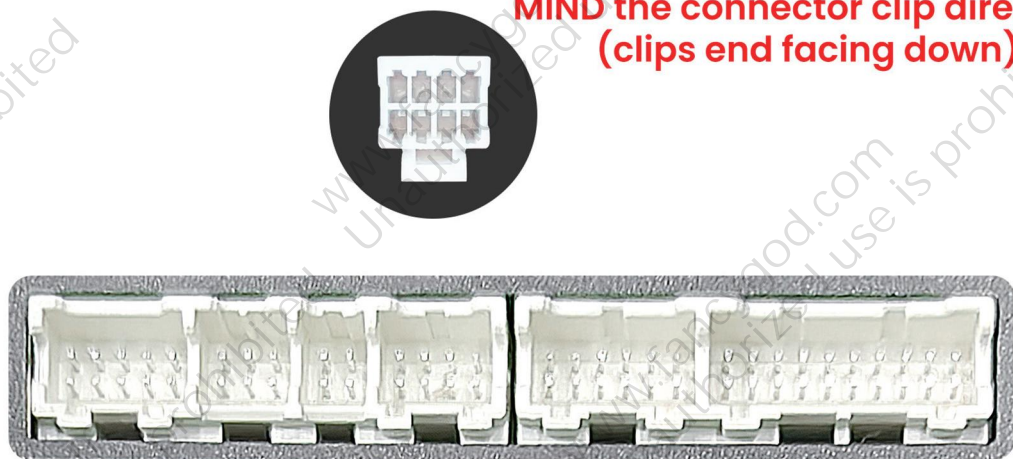
Post-installation rendering



Wiring diagram

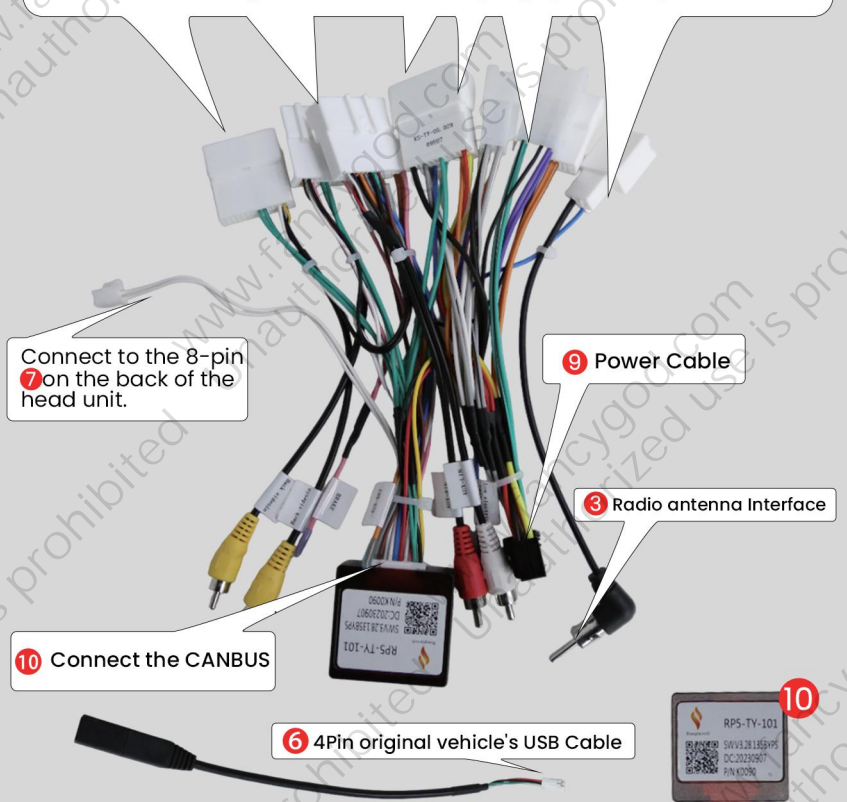


**MIND the connector clip direction
(clips end facing down).**



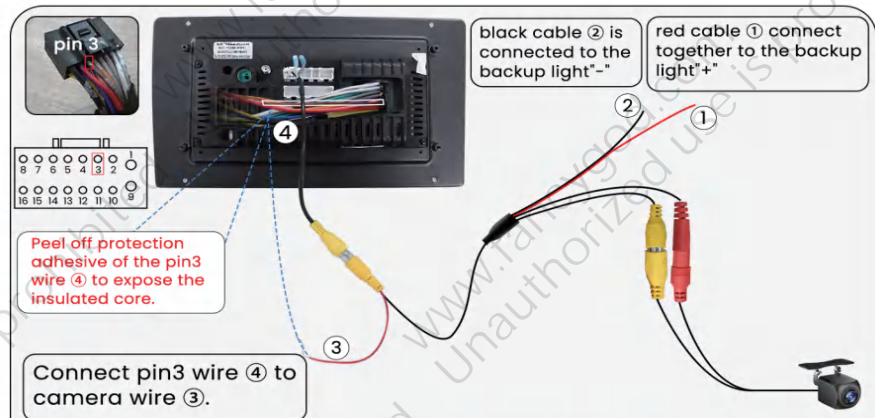
Original Vehicle Wiring Diagram

Connect the original car harness plug: power/speaker/SWC



Power Line Definition Chart

Front Left (+)			Rear Right (+)
Front Left (-)			Rear Right (-)
Front Right (+)			Rear Left(+)
Front Right (-)			Rear Left(-)
Steering Wheel Key(+)			Power Antenna(+)
Rear Camera(+)			Steering Wheel Key 2 (+)
Accessory/Ignition(+)			Dimmer/Illumination (+)
Chassis Ground (-)			Constant power supply



Wires color may be different due to various batches, but pin locations will be the same. You can search Youtube video ID "SYJaC6eQXnw" on Youtube to find our supplied camera connection video tutorial.

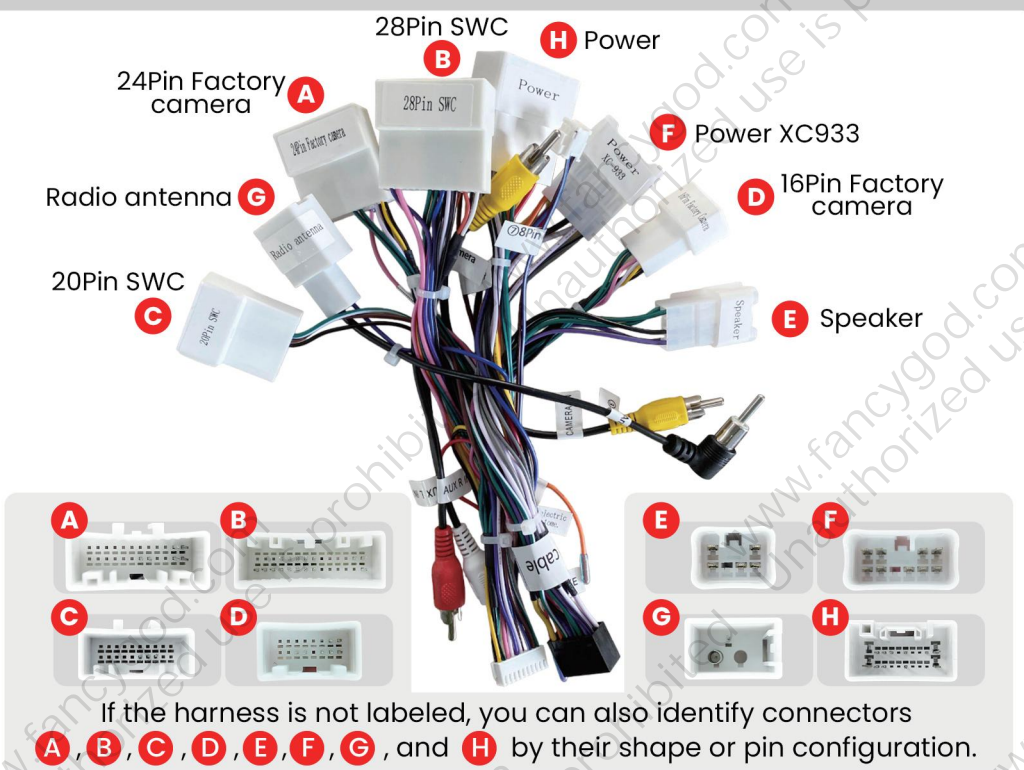
For more guidance/video tutorial, please copy this link or scan the QR code to enter into our official website:

<http://www.fancygod.com>

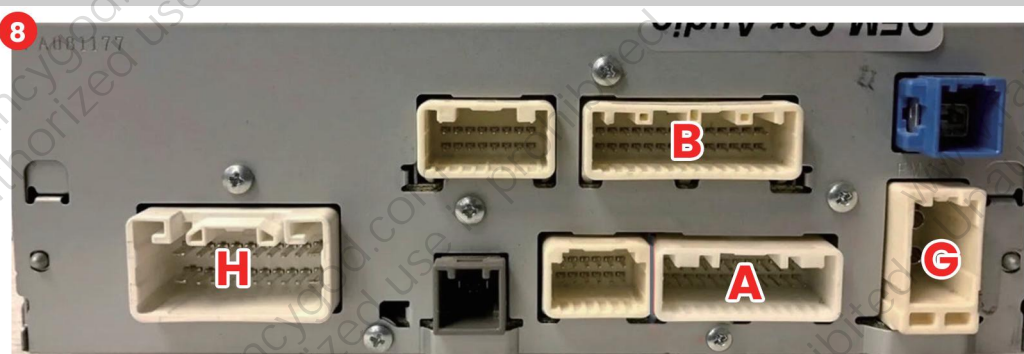
Instructions



Note: Since the D-type cable (XC-933) contains multiple plugs, the required cable varies depending on the factory radio. To avoid issues such as the radio not powering on due to incorrect cable connections, be sure to carefully follow the installation tutorial steps.



If your factory radio matches Image ①, please use C, F, and E harness from the **D-Cable (XC-933)** (The remaining harness do not need to be connected) to connect with the factory car radio plug, and follow the steps shown in Image ②:
Please press "Settings" → "Factory Settings" (enter the password 3368) → "Car Model," to choose "NULL—OTHER—No Protocol—Null."
If your car has steering wheel control buttons, please follow the instructions in Image ③, open the SWC app on the radio, and manually learn the steering wheel control keys according to the app's instructions.



If your factory radio matches Image ④, please use C and H harness from the **D-Cable (XC-933)** (The remaining harness do not need to be connected) to connect with the factory car radio plug, and follow the steps shown in Image ⑤:
Please press "Settings" → "Factory Settings" (enter the password 3368) → "Car Model," and choose "XP(Simple)—Toyota—PRA—DO—2014.LOW."



CAN Box type	Car Brand	Car Model	CAN Box
★ XP(Simple)	★ Toyota	★ Camry	★ 2014.LOW
★ OD	★ Nissan	★ RAV4	★ 2014.MID
★ LSDT	★ Ford	★ PRADO	★ 2014.HIGH
★ BNR	★ Jeep	★ Tr1151	

If your factory radio matches Image ⑥, please use the F, E, A, B, and G harness from the **D-Cable (XC-933)** (The remaining harness do not need to be connected) to connect with the factory car radio plug, and follow the steps shown in Image ⑦:
Please press "Settings" → "Factory Settings" (enter the password 3368) → "Car Model," and choose "XP(Simple)—Toyota—Camry—XP."



CAN Box type	Car Brand	Car Model	CAN Box
★ XP(Simple)	★ Toyota	★ Camry	★ XP
★ OD	★ Nissan	★ RAV4	★ AMP
★ LSDT	★ Ford	★ PRADO	★ 2018
★ BNR	★ Jeep	★ Tr1151	★ 2018.HIGH.AMP

If your factory radio matches Image ⑧ (with JBL sound system), please connect H, A, B and G harness from the **D-cable(XC-933)** (The remaining harness do not need to be connected) to the plugs from factory radio , and follow the steps shown in Image⑨

Please press "Settings" → "Factory Settings" (input password 3368) → Car Model," and set it to "XP(simple) – Toyota – Camry – AMP."

If sound abnormalities persist after selecting AMP,switch the CAN Box option to "2018.HIGH.AMP."

CAN Box type	Car Brand	Car Model	CAN Box
★ XP(Simple)	★ Toyota	★ Camry	★ XP
★ OD	★ Nissan	★ RAV4	★ AMP
★ LSDT	★ Ford	★ PRADO	★ 2018
★ BNR	★ Jeep	★ Tr1151	★ 2018.HIGH.AMP
★ DaoJun	★ OPEL		
★ XBS	★ Peugeot/Citroen		