

USE MANUAL

Car Stereo

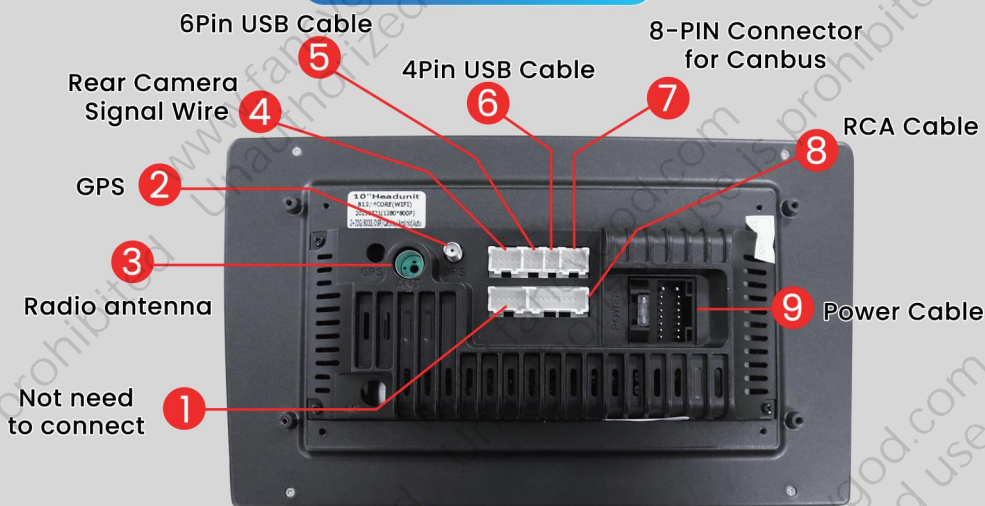
For Nissan X-Trail /Qashqai/Rogue 2014-2018

Central Control Disassembly and Operation

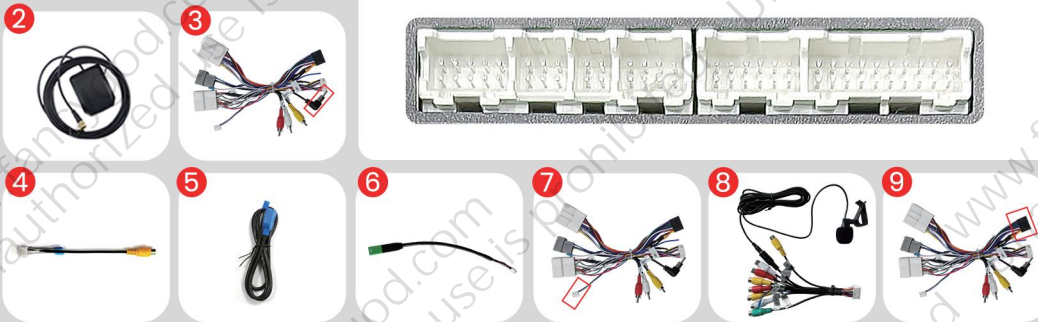
Post-installation rendering



Wiring diagram

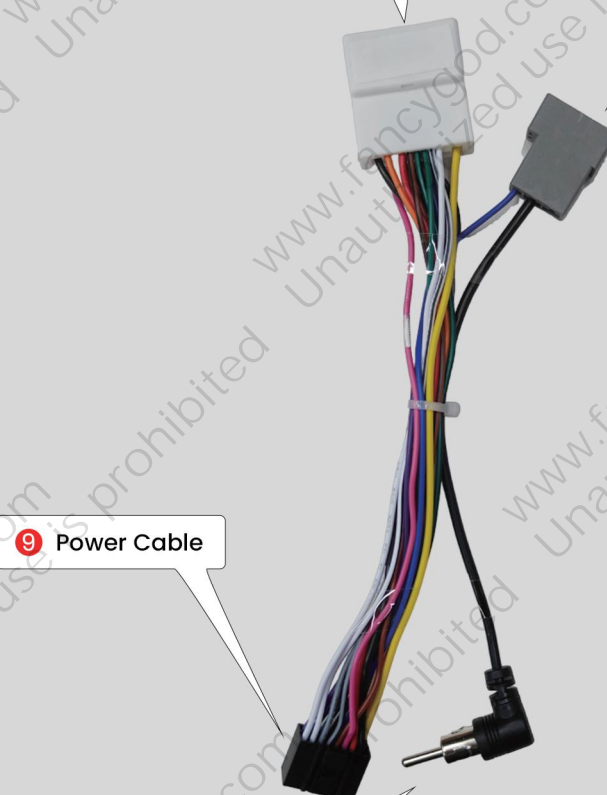


MIND the connector clip direction
(clips end facing down).



B-Cables XC-1290

Connect the original car harness plug: power/speaker/SWC

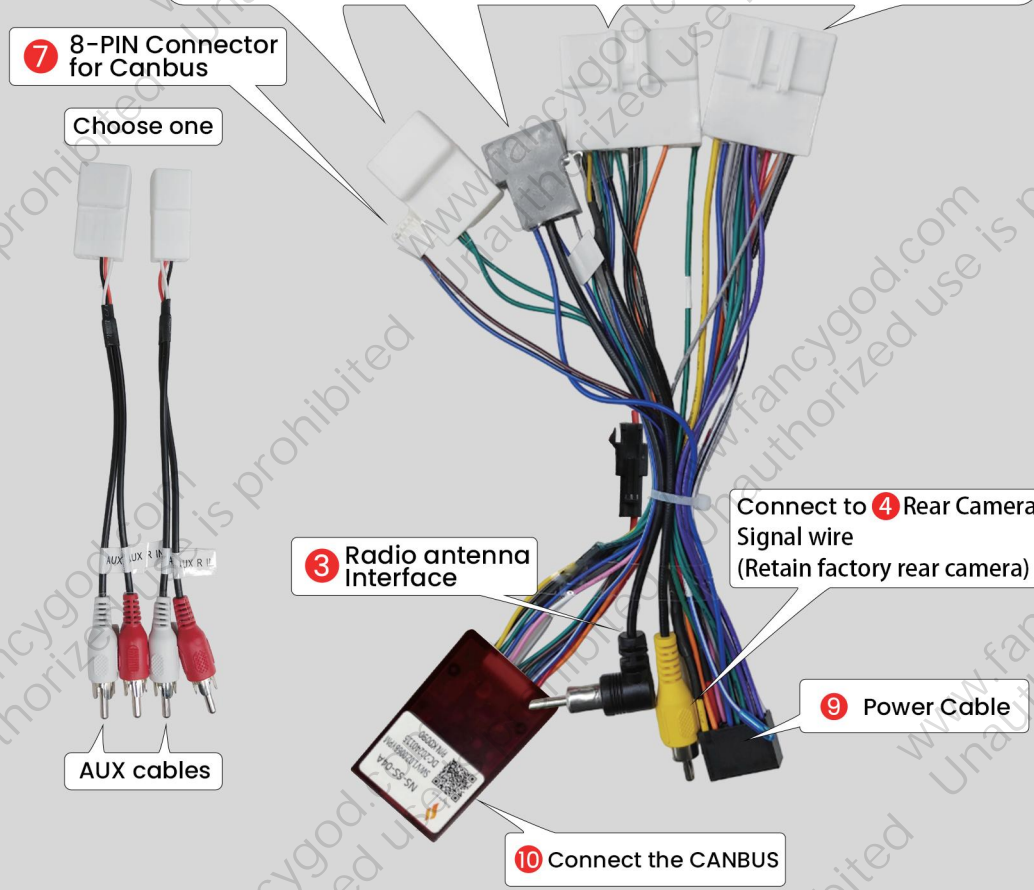


9 Power Cable

3 Radio antenna Interface

A-Cables XC-1291

Connect the original car harness plug: power/speaker/SWC



7 8-PIN Connector for Canbus

Choose one

3 Radio antenna Interface

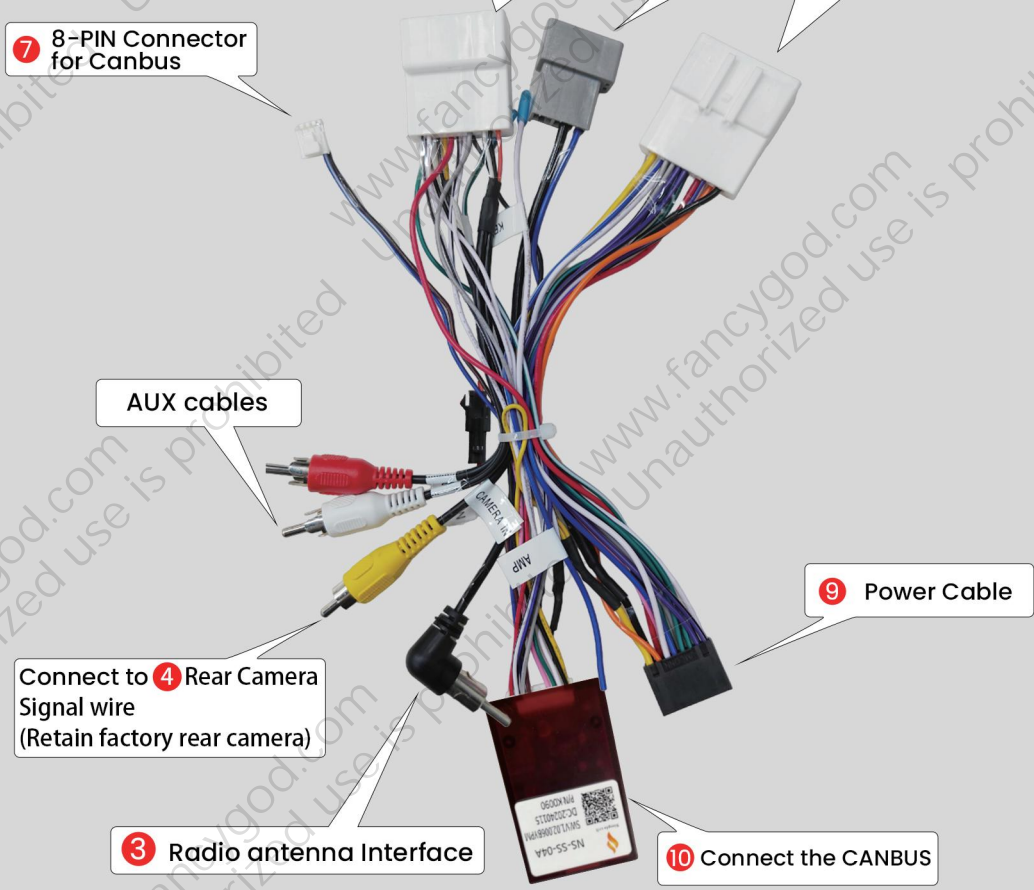
Connect to 4 Rear Camera Signal wire
(Retain factory rear camera)

9 Power Cable

10 Connect the CANBUS

C-Cables XC-1292

Connect the original car harness plug: power/speaker/SWC



7 8-PIN Connector for Canbus

AUX cables

Connect to 4 Rear Camera Signal wire
(Retain factory rear camera)

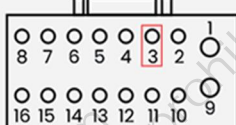
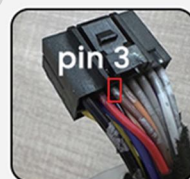
3 Radio antenna Interface

9 Power Cable

10 Connect the CANBUS

Power Line Definition Chart

Front Left (+)	<input type="checkbox"/>	<input type="checkbox"/>	Rear Right (+)
Front Left (-)	<input type="checkbox"/>	<input type="checkbox"/>	Rear Right (-)
Front Right (+)	<input type="checkbox"/>	<input type="checkbox"/>	Rear Left(+)
Front Right (-)	<input type="checkbox"/>	<input type="checkbox"/>	Rear Left(-)
Steering Wheel Key(+)	<input type="checkbox"/>	<input type="checkbox"/>	Power Antenna(+)
Rear Camera(+)	<input type="checkbox"/>	<input type="checkbox"/>	Steering Wheel Key 2 (+)
Accessory/Ignition(+)	<input checked="" type="checkbox"/>	<input type="checkbox"/>	Dimmer/Illumination (+)
Chassis Ground (-)	<input checked="" type="checkbox"/>	<input checked="" type="checkbox"/>	Constant power supply



Peel off protection adhesive of the pin3 wire ④ to expose the insulated core.

Connect pin3 wire ④ to camera wire ③

black cable ② is connected to the backup light "-"

red cable ① connect together to the backup light "+"

Wires color may be different due to various batches, but pin locations will be the same. You can search Youtube video ID "syJac6eOXnw" on Youtube to find our supplied camera connection video tutorial.

If your factory radio matches Image ①, please use **A-Cables (XC-1291)** and follow the steps shown in Image ②: please press "Settings" → "Factory Settings" (enter password 3368) → "Car Model," and set it to "XP(Simple)—Nissan—TEANA—2013."



After successfully completing the steps shown in Diagram ②, please make sure to test the steering wheel buttons first. If they do not function properly, please follow the instructions in Diagram ③ to connect pins 7, 17, and 18 on the factory car radio power plug to pins 4, 1, and 11 on the ⑨ Power Cable in three steps.

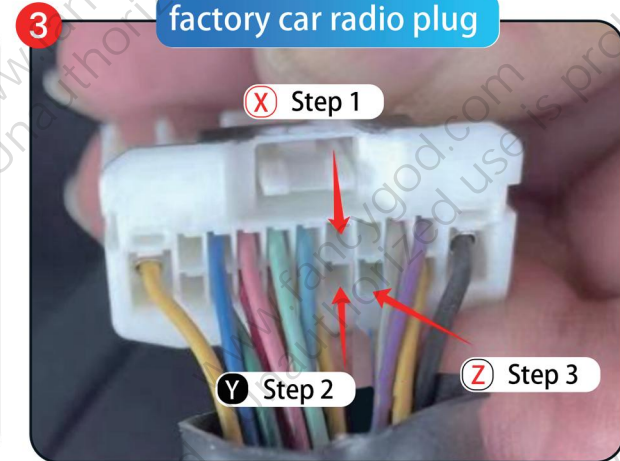
(Note: You can use a lighter to burn and peel off the skin of this wire (instead of cutting it off), wrap them up and use an insulating tape or a clip to protect the conjunction of them.)

Step 1: Connect the pin7 wire on the factory car radio plug with the pin4 (X) wire on the ⑨ power cable.

Step 2: Connect the pin17 wire on the factory car radio plug with the pin1 (Y) wire harness on the ⑨ power cable.

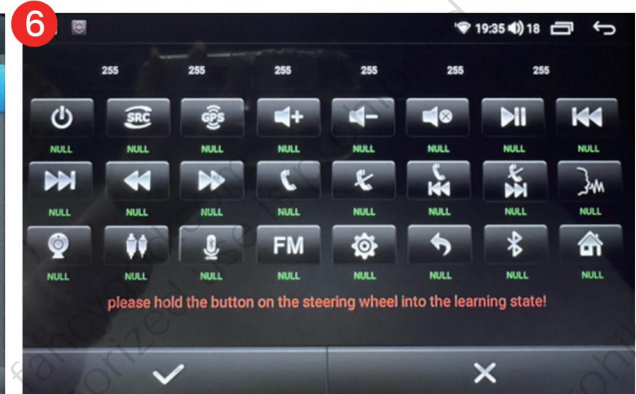
Step 3: Connect the pin18 wire on the factory car radio plug with the pin11 (Z) wire on the ⑨ power cable.

⑨ Power Cable			
Front Left (+)	<input type="checkbox"/>	<input type="checkbox"/>	Rear Right (+)
Front Left (-)	<input type="checkbox"/>	<input type="checkbox"/>	Rear Right (-)
Front Right (+)	<input type="checkbox"/>	<input type="checkbox"/>	Rear Left(+)
Front Right (-)	<input type="checkbox"/>	<input type="checkbox"/>	Rear Left(-)
Steering Wheel Key(+)	<input checked="" type="checkbox"/>	<input type="checkbox"/>	Power Antenna(+)
Rear Camera(+)	<input type="checkbox"/>	<input checked="" type="checkbox"/>	Steering Wheel Key 2 (+)
Accessory/Ignition(+)	<input checked="" type="checkbox"/>	<input type="checkbox"/>	Dimmer/Illumination (+)
Chassis Ground (-)	<input checked="" type="checkbox"/>	<input checked="" type="checkbox"/>	Constant power supply



If your factory radio matches Image ④, please use **B-Cables (XC-1290)** and follow the steps shown in Image ⑤: please press "Settings" → "Factory Settings" (enter the password 3368) → "Car Model," to choose "NULL—OTHER—No Protocol—Null."

If your car has steering wheel control buttons, please follow Image ⑥, open the SWC app on the radio, and refer to the app's instructions to manually learn the steering wheel control keys.



If your factory radio matches Image ⑦, please use **C-Cables (XC-1292)** and follow the steps shown in Image ⑧: please press "Settings" → "Factory Settings" (enter password 3368) → "Car Model," and set it to "XP(Simple)—Nissan—TEANA—2013."



If your factory radio matches Image ⑨, please contact the customer service team to send a new harness adapter to assist with installation.



For more guidance/video tutorial, please copy this link or scan the QR code to enter into our official website:
<http://www.fancygod.com>

Instructions

