

# USE MANUAL

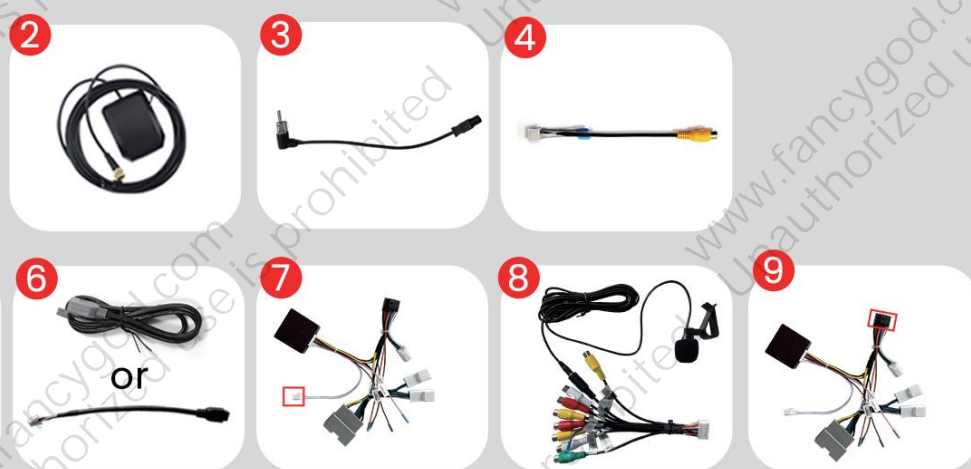
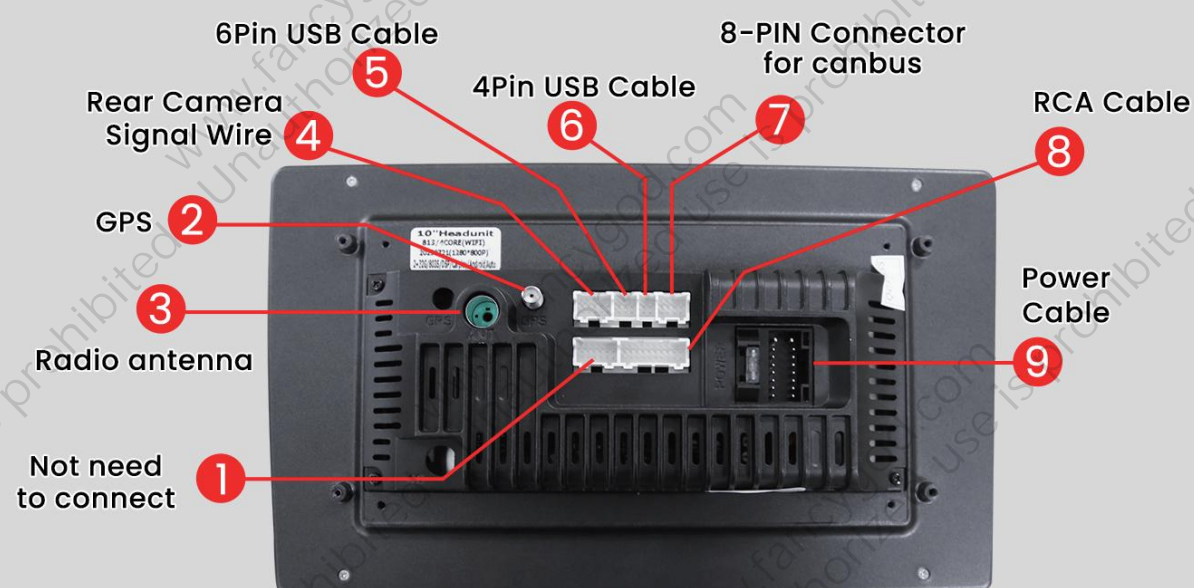
## Car Stereo radio for Jeep Grand Cherokee WK 2011-2013

### Central Control Disassembly and Operation

### Post-installation rendering



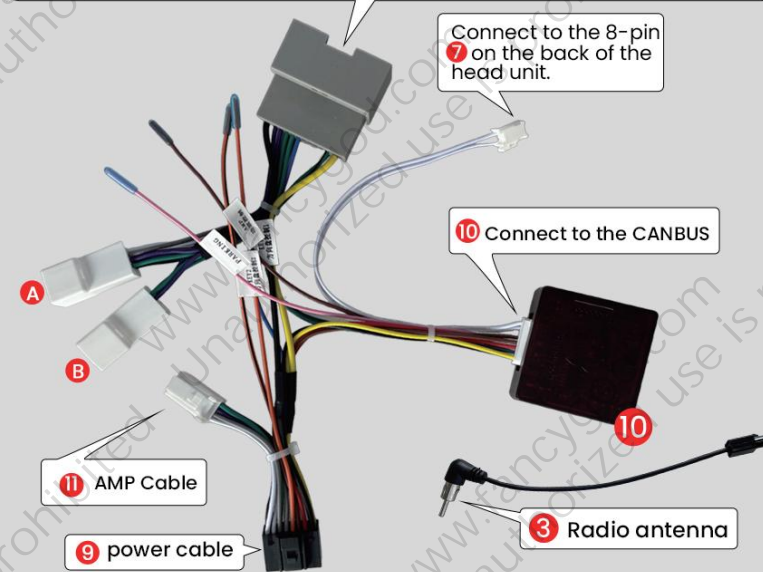
#### Wiring diagram



**MIND the connector clip direction  
(clips end facing down).**

#### Original Vehicle Wiring Diagram

Connect to the original car harness plug: power/speaker/SWC



The car is equipped with an amplifier (Alpine or infinity system)

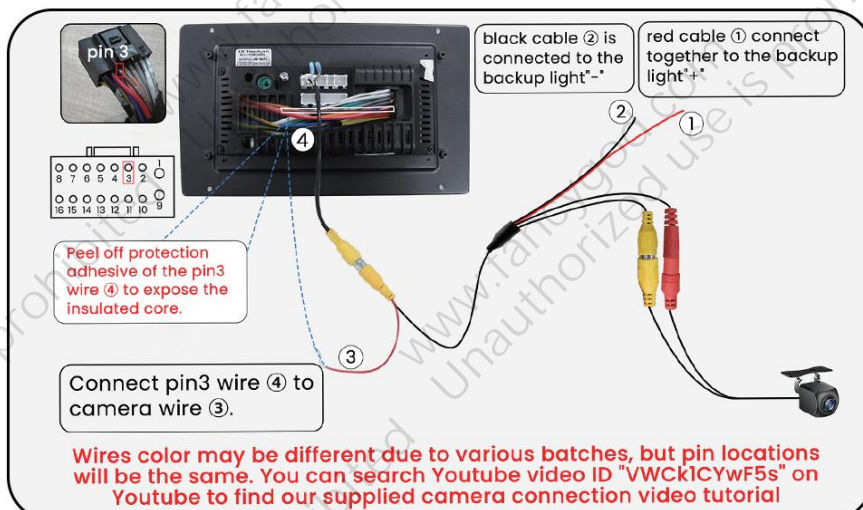
B + 11  
4Pin

The car is not equipped with an amplifier

A + 11  
8Pin

#### Power Line Definition Chart

Front Left (+)			Rear Right (+)
Front Left (-)			Rear Right (-)
Front Right (+)			Rear Left(+)
Front Right (-)			Rear Left(-)
Steering Wheel Key(+)			Power Antenna(+)
Rear Camera(+)			Steering Wheel Key 2 (+)
Accessory/ignition(+)			Dimmer/Illumination (+)
Chassis Ground (-)			Constant power supply



For more guidance/video tutorial, please copy this link or scan the QR code to enter into our official website:

<http://www.fancygod.com>

Instructions





To prevent issues with steering wheel controls, air conditioning, or volume not functioning properly, please be sure to follow the steps shown in image 1:

Please press Settings—Factory(input password 3368)—Car Model, and select “XP (Simple) — Jeep — Grand Cherokee — DVD”

1

CAN Box type	Car Brand	Car Model	CAN Box
★ XP(Simple)	★ Jeep	★ ALL	★ DVD
★ OD	★ OPEL	★ Renegade	★ DVD AMP
★ LSDT	★ Peugeot/Citroen	★ compass	
★ BNR	★ CHERY	★ Grand Cherokee	
★ DaoJun	★ Mitsubishi	★ Cherokee	
★ XBS	★ Renault		
Grand Cherokee			

## FAQ

### Q: How to use wireless Apple CarPlay?

- 1. Turn on Bluetooth app on the radio and connect to your phone's bluetooth (password: 0000).
- 2. Open the Carlink 2.0 App on the car radio to activate Carplay. (Scan the QR code on the right to view the video tutorial)



### Q: How to use wireless Android auto?

- 1. Turn on Bluetooth app on the radio and connect to your phone's bluetooth (password: 0000).
- 2. Download the Android Auto APP at your phone's Play store first (Confirm the phone can support Android Auto).
- 3. Open the Carlink 2.0 App on the car radio to activate Android Auto. (Scan the QR code on the right to view the video tutorial)



### FCC warning

This device complies with Part 15 of the FCC Rules. Operation is subject to the following two conditions:(1) this device may not causeharmful interference,and (2) this device must accept any interference received, including interference that may cause undesired operation.