

USE MANUAL

Car Stereo

for Ford Focus 2012-2018

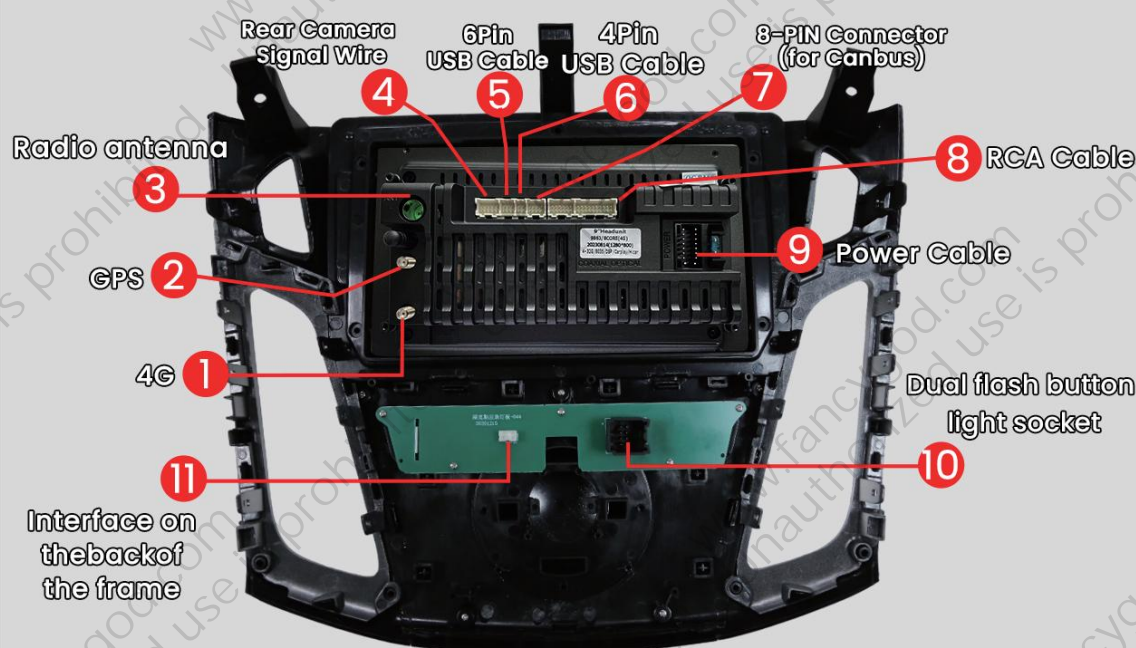
9 inch

Central Control Disassembly
and Operation

Post-installation rendering



Wiring diagram

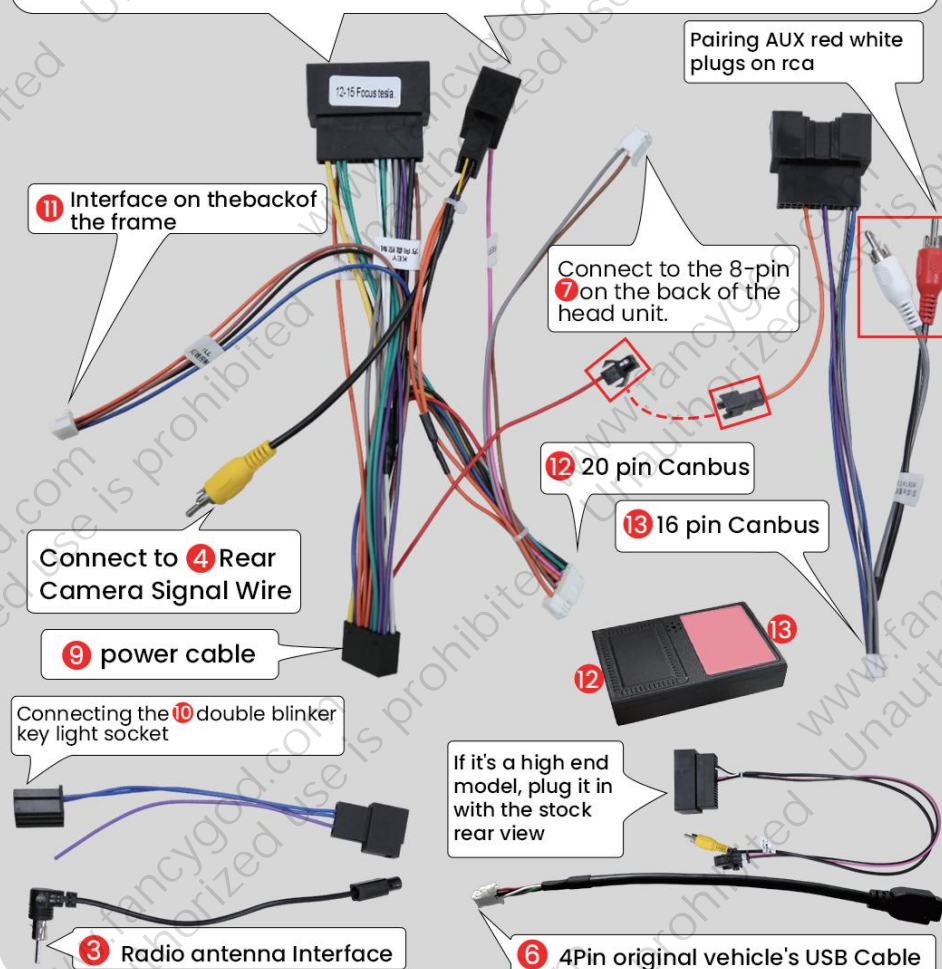


**MIND the connector clip direction
(clips end facing down).**



Original Vehicle Wiring Diagram

Connect the original car harness plug: power/speaker/SWC



Power Line Definition Chart

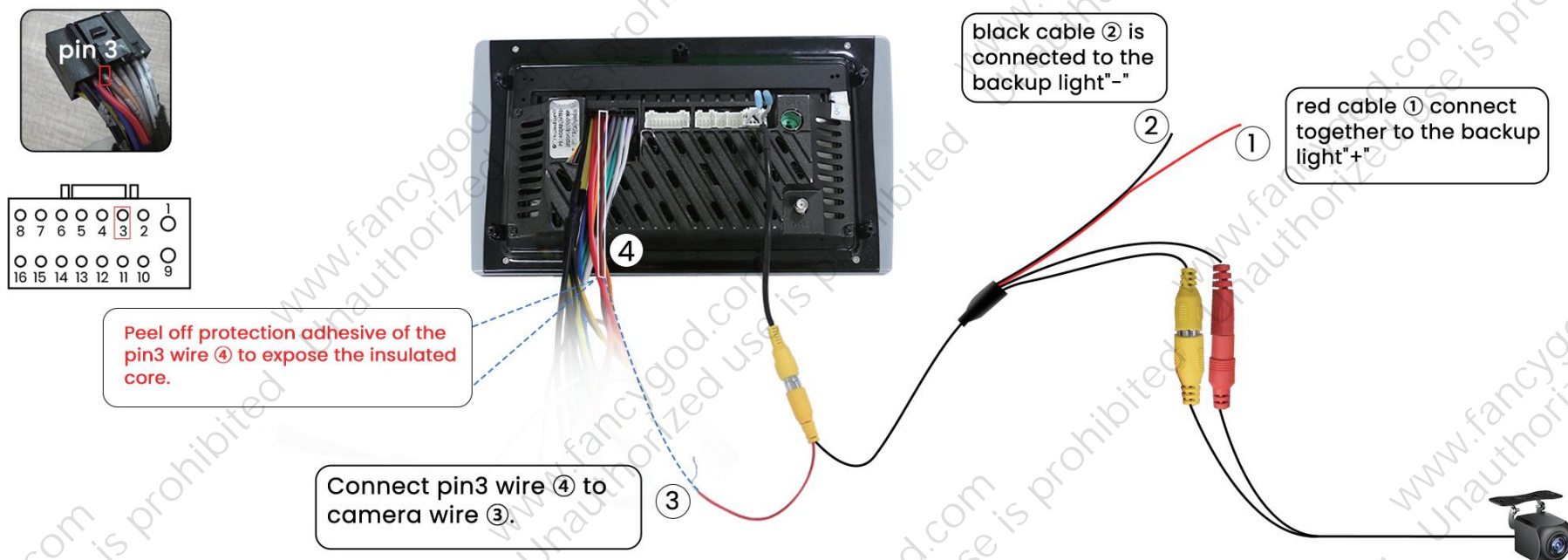
Front Left (+)			Rear Right (+)
Front Left (-)			Rear Right (-)
Front Right (+)			Rear Left(+)
Front Right			Rear Left(-)
Steering Wheel Key(+)			Power Antenna(+)
Rear Camera(+)			Steering Wheel Key 2 (+)
Accessory/Ignition(+)			Dimmer/Illumination (+)
Chassis Ground (-)			Constant power supply

Instructions

For more guidance/video tutorial, please copy this link
or scan the QR code to enter into our official website:

<http://www.fancygod.com>





Wires color may be different due to various batches, but pin locations will be the same. You can search Youtube video ID "VWCKlCYWF5s" on Youtube to find our supplied camera connection video tutorial



If your hazard light and unlock door button are together (as shown in pic 1), Please use the plug-A with the label name "High model hazard light"



If your OEM center console only has a hazard light button (as shown in pic 2), please use the plug-B (with no label).



To prevent issues with steering wheel controls, air conditioning, or volume not functioning properly, please be sure to follow the steps shown in image 1:

Please press Settings—Factory (input password 3368)—Car Model, and select "RZC (Raise) — Ford — Focus — 2005-2018.Mid"

