

USE MANUAL

Car Stereo radio

for Hyundai Sonata

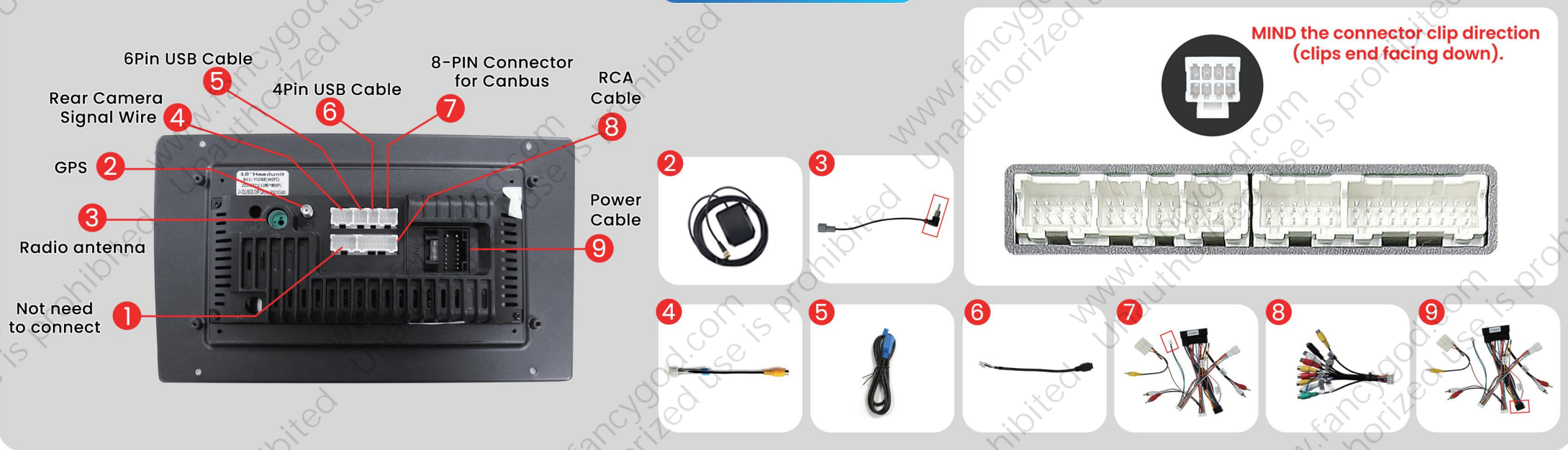
2015-2017

Central Control Disassembly
and Operation

Post-installation rendering



Wiring diagram



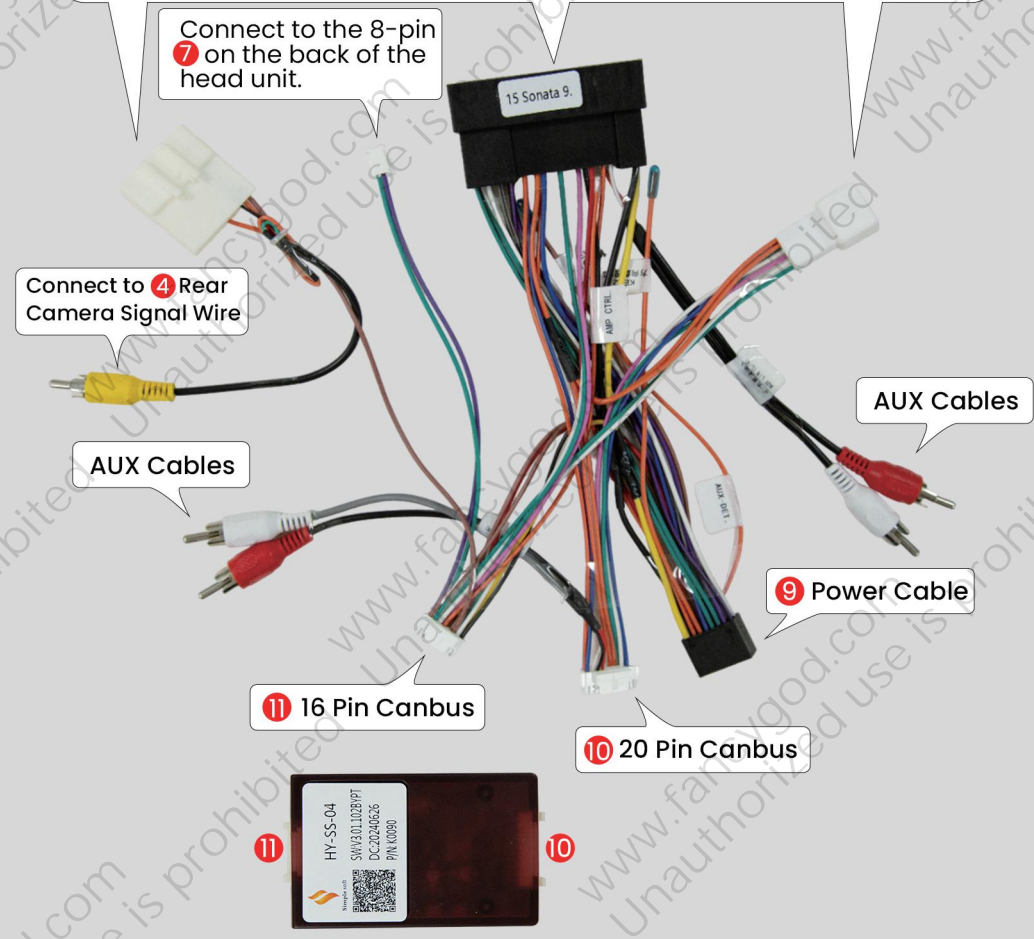
A-Cables XC-1485

Connect the original car harness plug: power/speaker/SWC



B-Cables XC-1484

Connect the original car harness plug: power/speaker/SWC



For more guidance/video tutorial, please copy this link
or scan the QR code to enter into our official website:

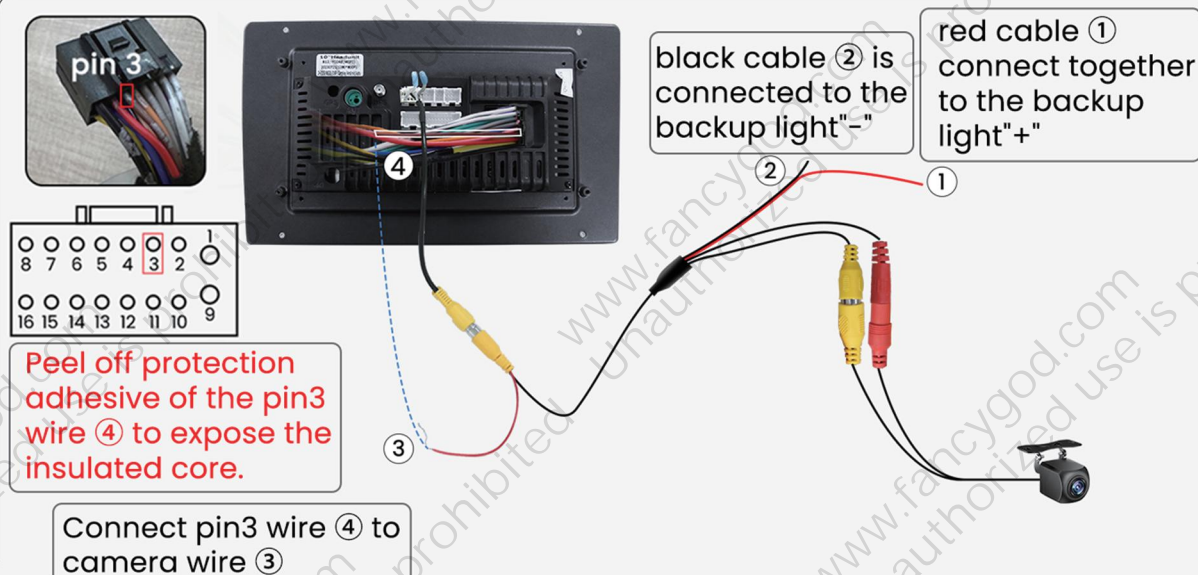
<http://www.fancygod.com>

Instructions



Power Line Definition Chart

Front Left (+)	<input type="checkbox"/>	<input type="checkbox"/>	Rear Right (+)
Front Left (-)	<input type="checkbox"/>	<input type="checkbox"/>	Rear Right (-)
Front Right (+)	<input type="checkbox"/>	<input type="checkbox"/>	Rear Left(+)
Front Right (-)	<input type="checkbox"/>	<input type="checkbox"/>	Rear Left(-)
Steering Wheel Key(+)	<input type="checkbox"/>	<input type="checkbox"/>	Power Antenna(+)
Rear Camera(+)	<input type="checkbox"/>	<input type="checkbox"/>	Steering Wheel Key 2 (+)
Accessory/Ignition(+)	<input checked="" type="checkbox"/>	<input type="checkbox"/>	Dimmer/Illumination (+)
Chassis Ground (-)	<input checked="" type="checkbox"/>	<input checked="" type="checkbox"/>	Constant power supply



Wires color may be different due to various batches, but pin locations will be the same.
You can search Youtube video ID "VWCKlCYwF5s" on Youtube to find our supplied camera connection video tutorial

Note: please select the correct wiring harness (A-cables or B-cables) according to the shape and pin configuration of the factory car's plug.

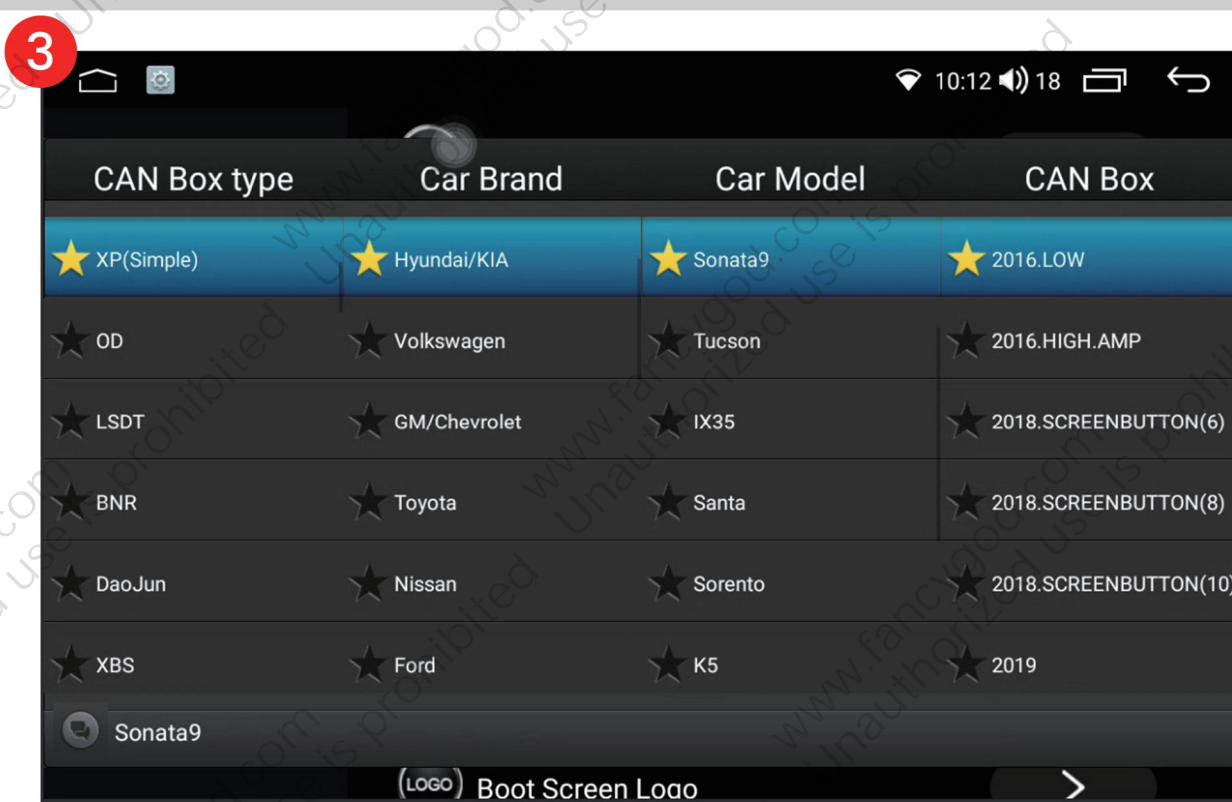
If you are using **A-cables**. Please be sure to follow the steps shown in pic ①, press Setting → Factory (input password 3368) → Car Model to choose "NULL—OTHER—No protocol—Null".

If your car has steering wheel control buttons, To prevent the steering wheel controls not working properly, please open the SWC app on the radio and refer to the app's instruction to manual learn the steering wheel control keys accordingly (as shown in pic ②).



If you are using **B-cables**. To prevent issues with steering wheel controls, air conditioning, or volume not functioning properly, please be sure to follow the steps shown in Image ③:

Please press Settings—Factory Settings (input password 3368)—Car Model, and select "XP (Simple) —Hyundai/KIA —Sonata9—2016.LOW"



FCC warning

This device complies with Part 15 of the FCC Rules. Operation is subject to the following two conditions:(1) this device may not causeharmful interference,and (2) this device must accept any interference received,including interference that may cause undesired operation.