

# USE MANUAL

## Car Stereo

for Ford Focus 2012-2018

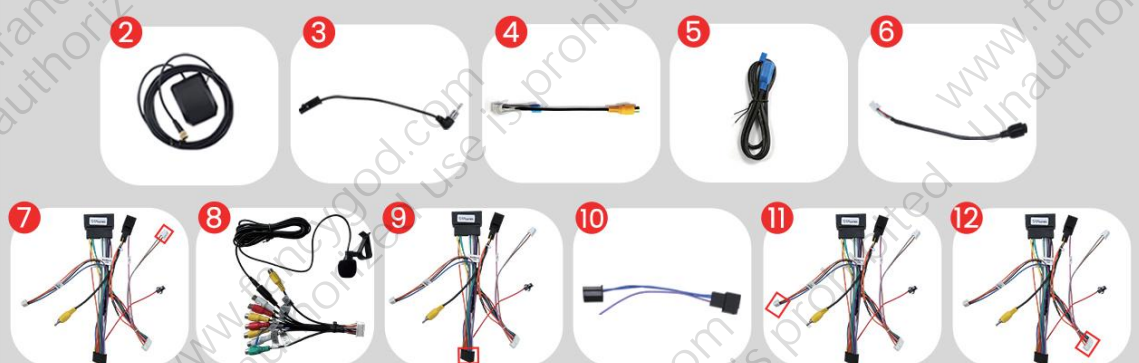
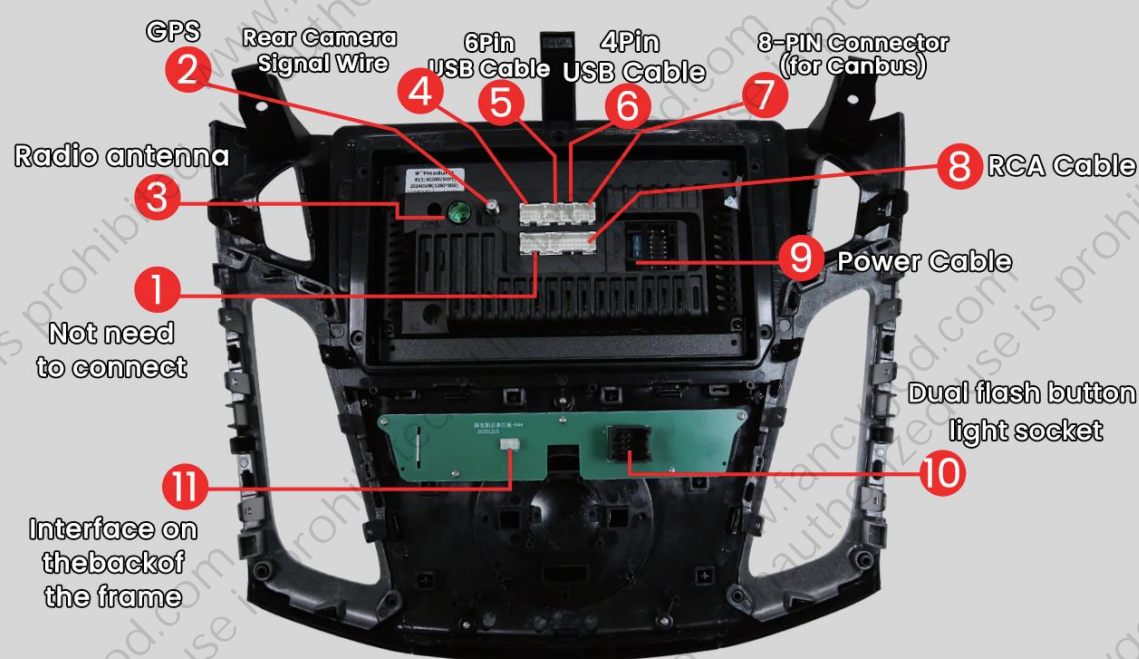
9 inch

Central Control Disassembly  
and Operation

Post-installation rendering



### Wiring diagram

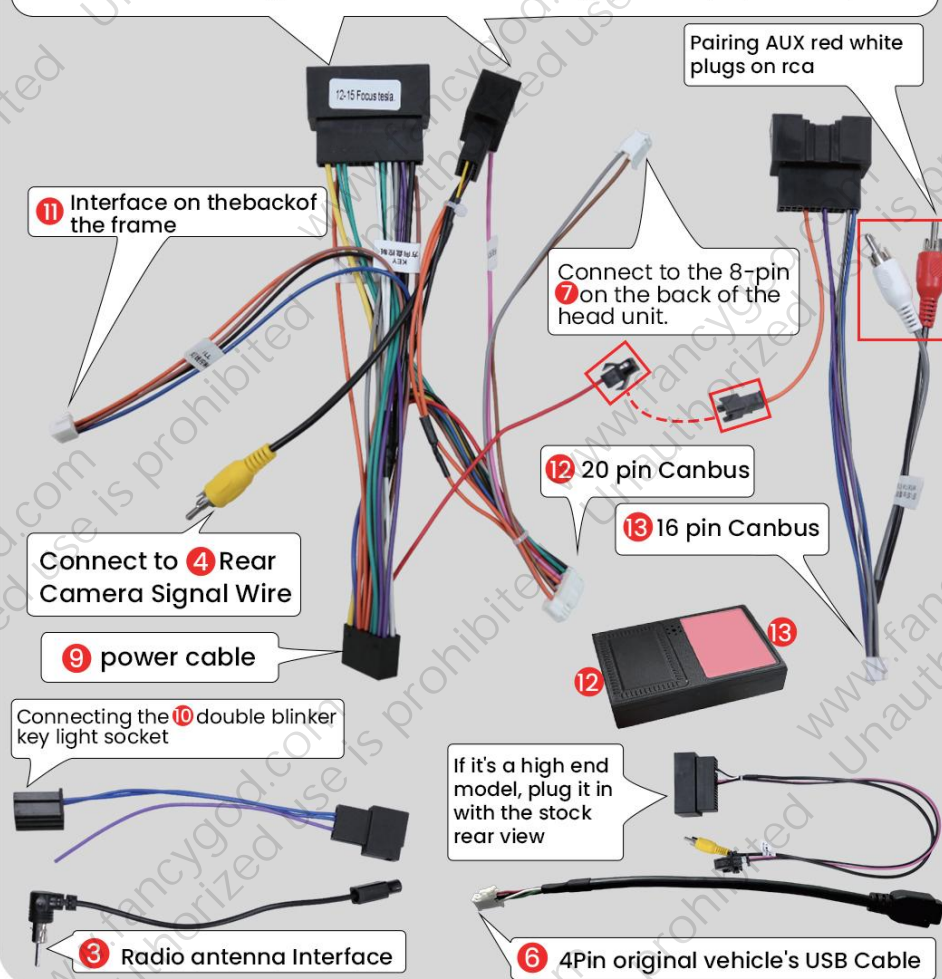


**MIND the connector clip direction  
(clips end facing down).**



### Original Vehicle Wiring Diagram

Connect the original car harness plug: power/speaker/SWC



### Power Line Definition Chart

Front Left (+)			Rear Right (+)
Front Left (-)			Rear Right (-)
Front Right (+)			Rear Left(+)
Front Right			Rear Left(-)
Steering Wheel Key(+)			Power Antenna(+)
Rear Camera(+)			Steering Wheel Key 2 (+)
Accessory/Ignition(+)			Dimmer/Illumination (+)
Chassis Ground (-)			Constant power supply

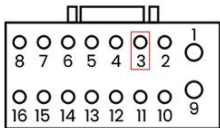
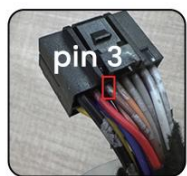
Instructions

For more guidance/video tutorial, please copy this link  
or scan the QR code to enter into our official website:

<http://www.fancygod.com>







Peel off protection adhesive of the pin3 wire ④ to expose the insulated core.

Connect pin3 wire ④ to camera wire ③.



black cable ② is connected to the backup light"-"

red cable ① connect together to the backup light"+"

Wires color may be different due to various batches, but pin locations will be the same. You can search Youtube video ID "VWcklCYwF5s" on Youtube to find our supplied camera connection video tutorial



A "High model hazard light"

B (with no label).

If your hazard light and unlock door button are together(as shown in pic ① ), Please use the plug-A with the label name "High model hazard light"



If your OEM center console only has a hazard light button(as shown in pic ② ), please use the plug-B(with no label).



To prevent issues with steering wheel controls, air conditioning, or volume not functioning properly, please be sure to follow the steps shown in image ① :

Please press Settings—Factory (input password 3368)—Car Model, and select "RZC (Raise) — Ford — Focus — 2005-2018.Mid"

