

USE MANUAL

Car Stereo

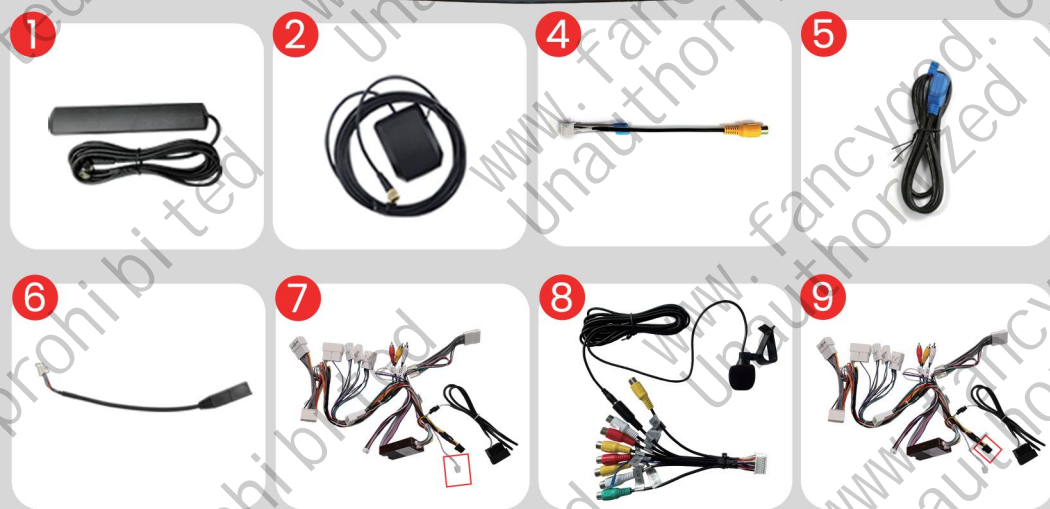
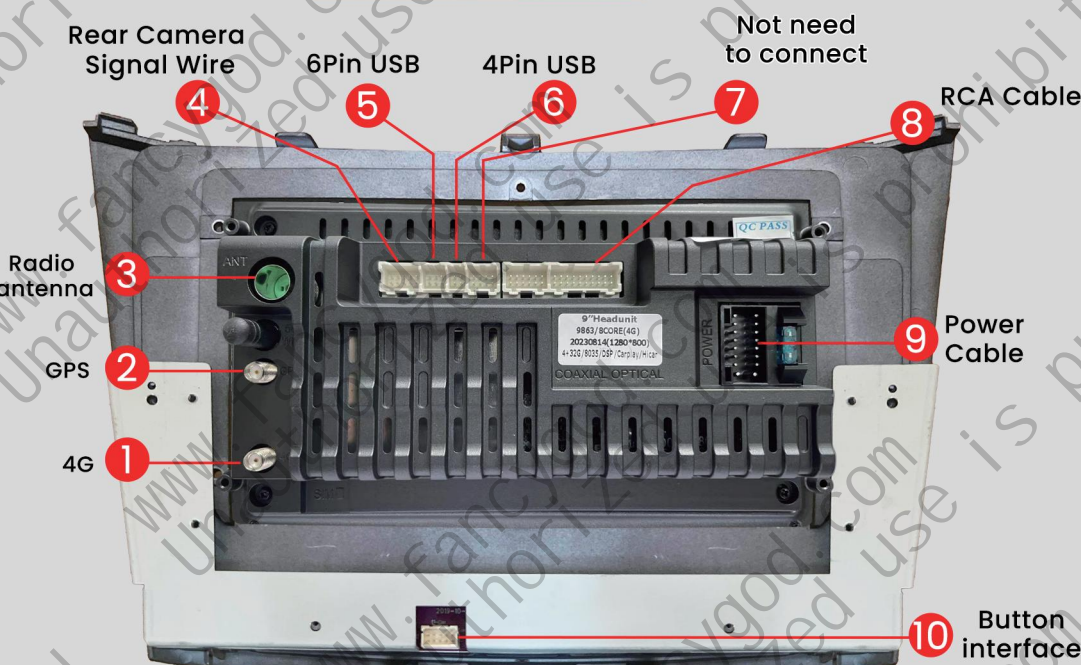
for Lexus IS250 IS300 IS350 2006-2012

Central Control Disassembly and Operation

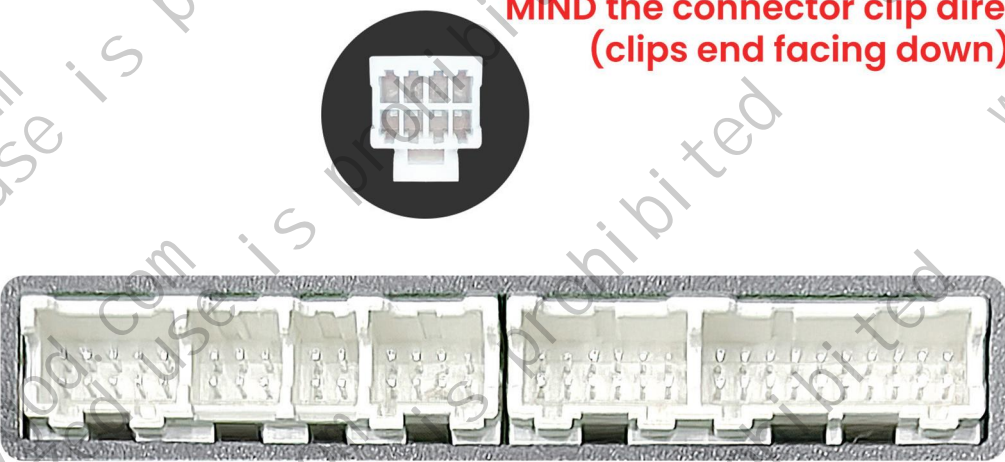
Post-installation rendering



Wiring diagram

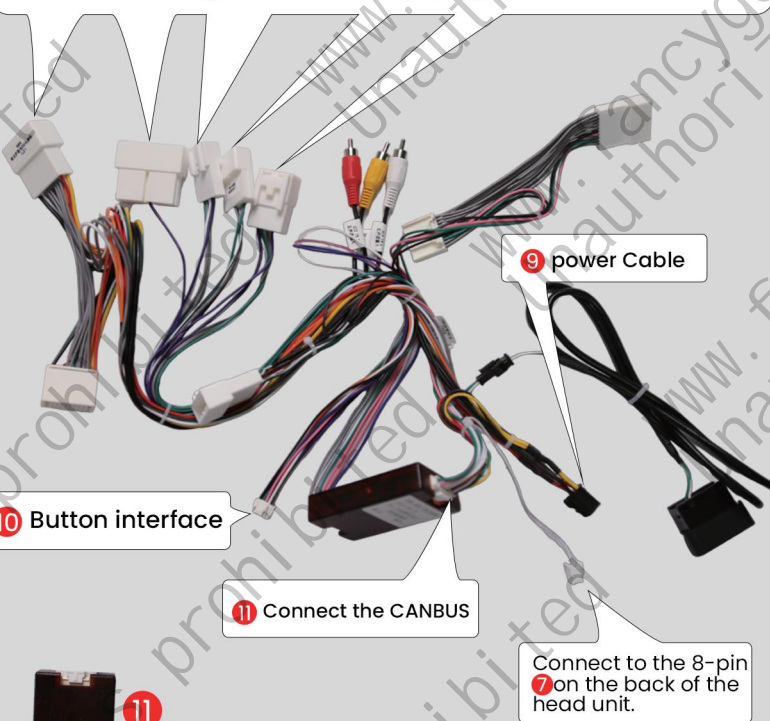


MIND the connector clip direction (clips end facing down).



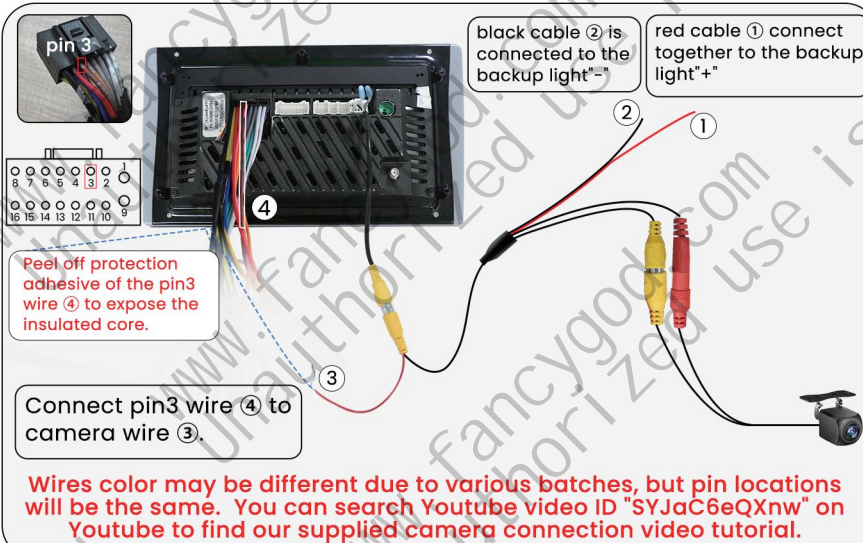
Original Vehicle Wiring Diagram

Connect the original car harness plug: power/speaker/SWC



Power Line Definition Chart

Front Left (+)			Rear Right (+)
Front Left (-)			Rear Right (-)
Front Right (+)			Rear Left(+)
Front Right (-)			Rear Left(-)
Steering Wheel Key(+)			Power Antenna(+)
Rear Camera(+)			Steering Wheel Key 2 (+)
Accessory/Ignition(+)			Dimmer/Illumination (+)
Chassis Ground (-)			Constant power supply

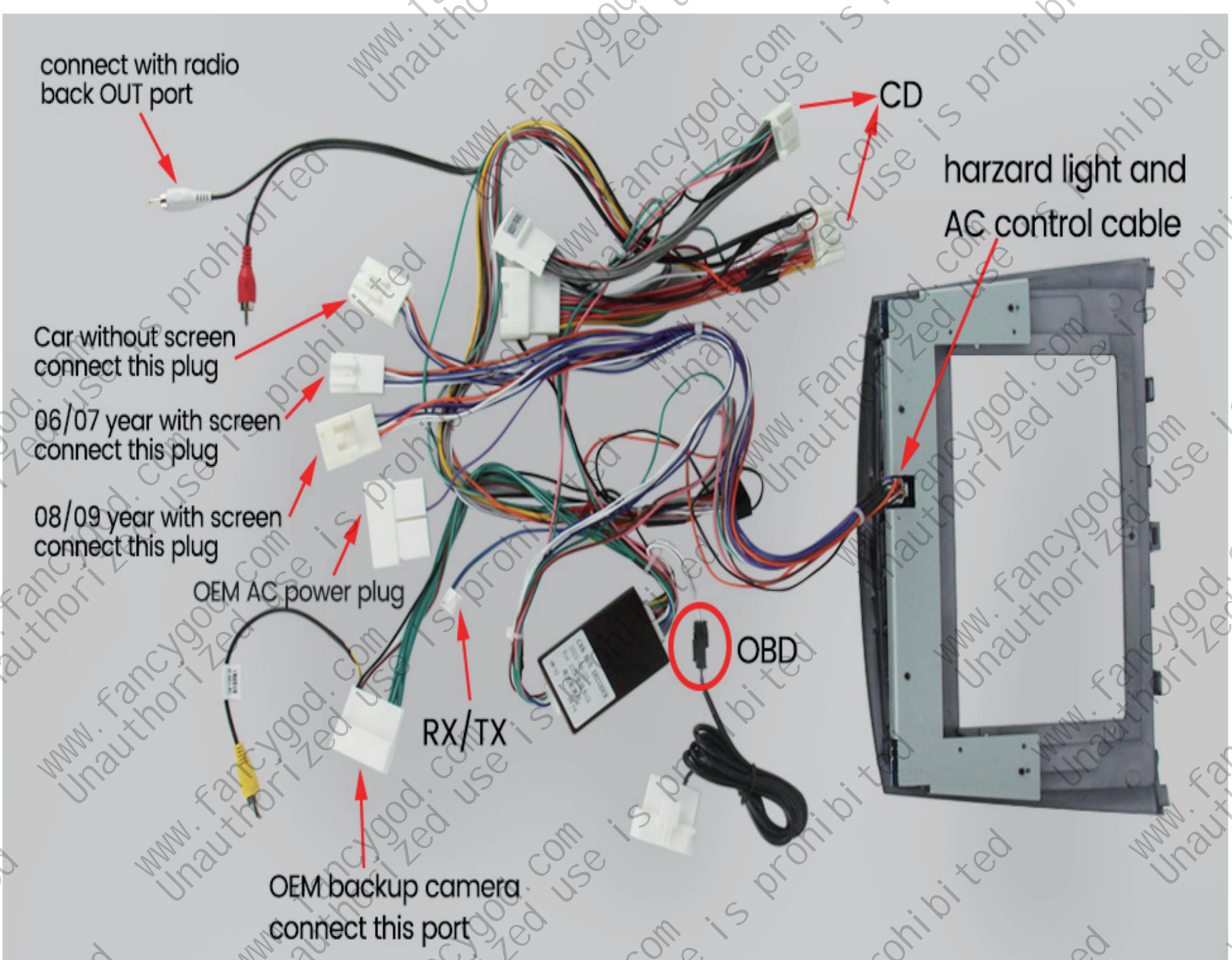


For more guidance/video tutorial, please copy this link or scan the QR code to enter into our official website:

<http://www.fancygod.com>

Instructions





To prevent issues such as steering wheel controls not functioning, please be sure to follow the setup steps shown below.

Please press Settings—Factory Settings (input password 3368)—Car Model to Choose “LZ(HZ)—Toyota —LEXUS IS—NO AIR”

CAN Box type	Car Brand	Car Model	CAN Box
★ LZ(HZ)	★ Toyota	★ LEXUS IS	★ NO AIR
★ HSY	★ Nissan	★ LEXUS RX450	★ NO AIR AMP
★ CK	★ Ford	★ LEXUS RX270	
★ ZX	★ Haval	★ LEXUS RX	
★ HS	★ Chrysler	★ REZI	
★ RCW	★ Landrover	★ LAND CRUISER	
LEXUS IS			
(LOGO) Boot Screen Logo			>

FCC warning

This device complies with Part 15 of the FCC Rules. Operation is subject to the following two conditions:(1) this device may not cause harmful interference, and (2) this device must accept any interference received, including interference that may cause undesired operation.